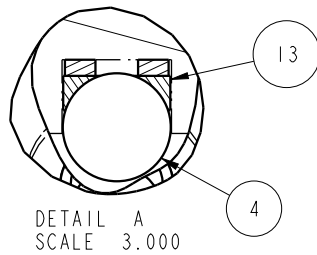
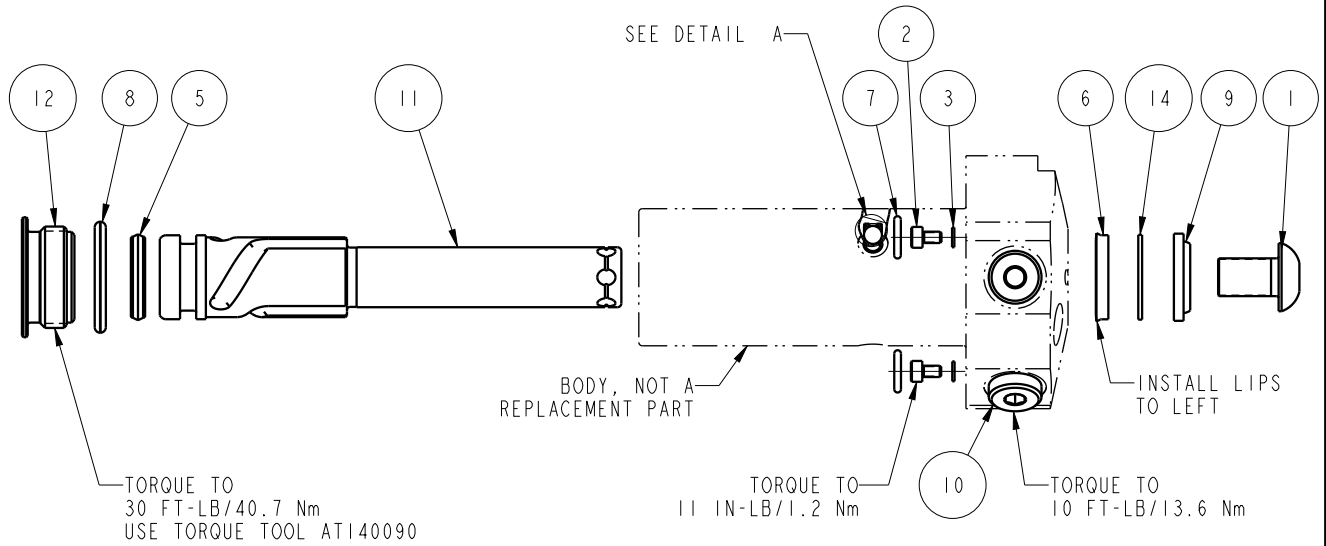


NO	QTY	PART NO	DESCRIPTION	STD SEAL KIT	FKM SEAL KIT
1	1	21500009	SCREW, CAP, BTNH, M10 X 16, ALY		
2	2	21500018	SCREW, CAP, SOCH, M3 X 5, ALY		
3	2	21500200	WASHER		
4	3	23600011	BALL, STEEL, ALLOY, .187	X	X
5	1	39010018	SEAL, CROWN, 11/16x7/8x5/32	X	39V10018
6	1	39010020	SEAL, BEVEL W/HHEEL INSERT, 5/8 x 1/8 x 7/8	X	39V10020
7	2	39050042	O-RING, (-011)	X	39051025
8	1	39051031	O-RING, (-912)	X	X
9	1	39053001	WIPER, SNAP-IN, (5/8)	X	X
10	2	43068004	PLUG, SOCH, G1/8		
11	1	47510913	PLUNGER, SC, HS, 4.9KN, LH, LS		
12	1	81400029	RETAINER, SC, HS, 1100		
13	3	90199957	ASSY, BALLSEAT, SC, 1100	X	X
14	1	39F54001	BU RING, (-208 CUSTOM)	X	X
N/A	N/A	60414502	KIT, SEAL, STANDARD		
N/A	N/A	6V414502	KIT, SEAL, FKM		



<b>PARTS LIST</b>	
	VEKTEK, INC. 1334 E. SIXTH AVE. P.O. BOX 625 EMPORIA, KS. 66801 U.S.A.
ASSEMBLIES AFFECTED 41460524	PARTS LIST, ASSY, SC, TF, TC, 4.9KN, DA, LH, LS
SIZE A	MPLV1414
	REV C

C	5279	RELEASE	ALS	4/25/24
REV	IN ACCORDANCE WITH ECN	EFFECTIVE DATE	REVISED BY	DATE
DRW BY:	DRAWING STATUS: <b>Released</b>			
DATE:	PRODUCTION APPROVED FOR RELEASED STATUS ONLY			

SHEET 1 OF 1